

## Connecting a Vanguard Unit via Bluetooth

Some Vanguard test equipment offer the ability to connect to a PC or Android tablet wirelessly via Bluetooth. Please use the instructions below to pair the Vanguard unit to a PC or Android tablet via Bluetooth. A Vanguard TRM is used in the examples below.

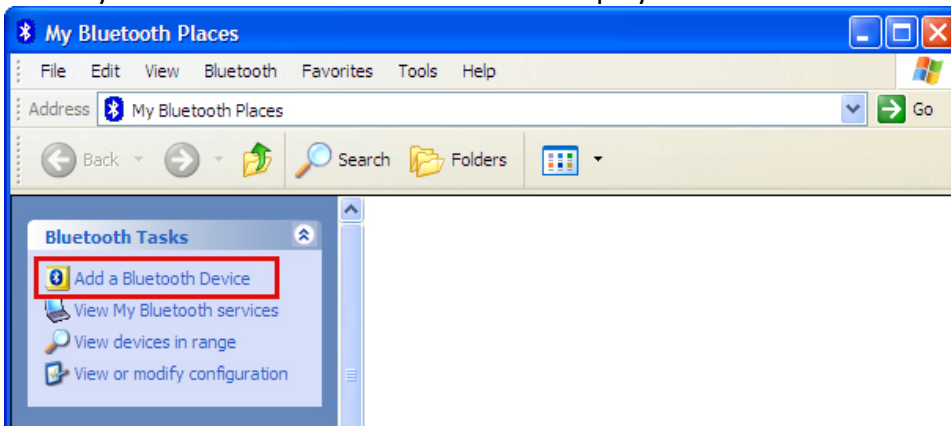
### Connecting a Vanguard Unit to a PC via Bluetooth

For Windows XP:

- a. Make sure the unit is turned on. Then double click on the Bluetooth system tray icon (on the bottom right corner of your computer screen):

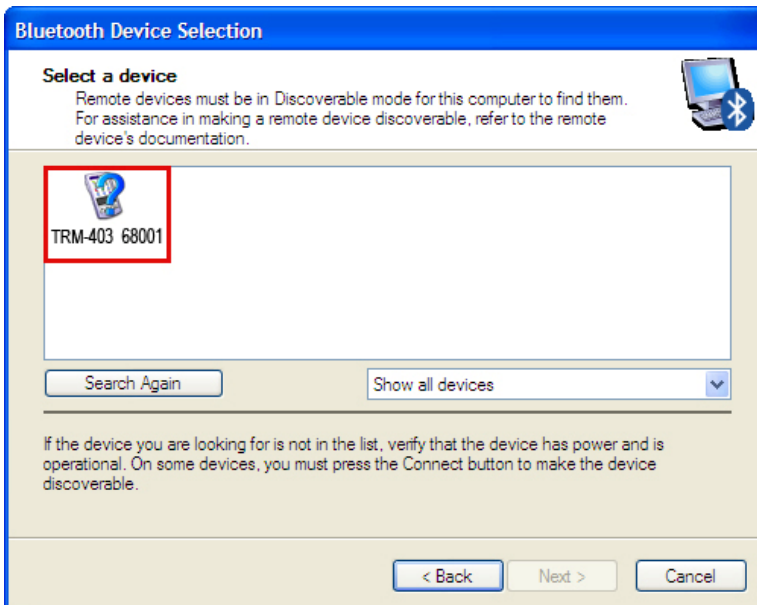


- b. The “My Bluetooth Places” window will be displayed:



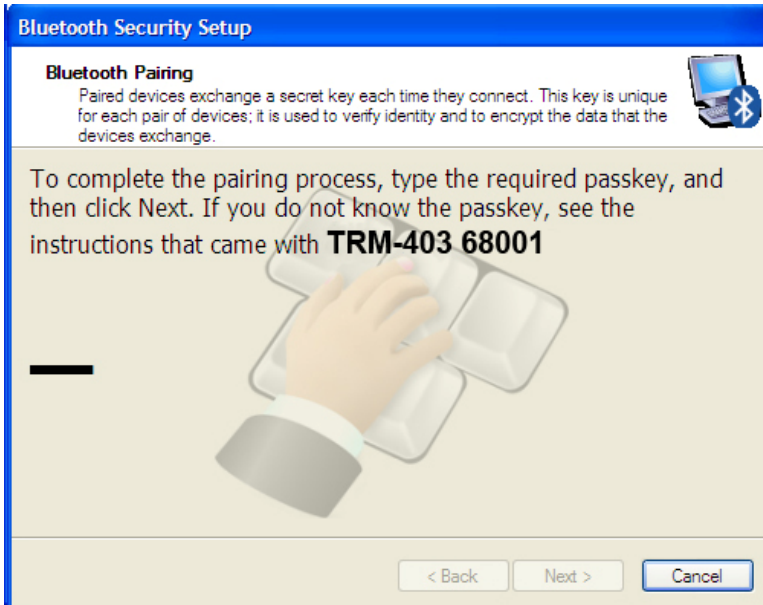
Click on “Add a Bluetooth Device” on the left window pane.

- c. The Bluetooth Setup Wizard window will be displayed. Click on the “Next” button. The PC will scan for nearby devices and list all available Bluetooth devices:



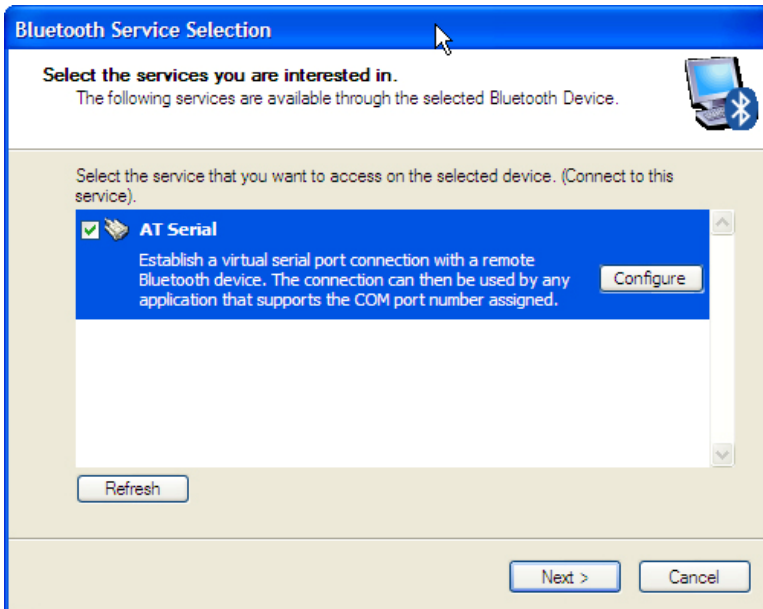
The will be listed as “UNIT S/N” where UNIT is the name of the unit (TRM-403 in this case) and S/N is the device’s serial number. Click on the icon for the unit and then click on the “Next” button.

- d. The following window will be displayed asking for a secret key to connect to the unit:



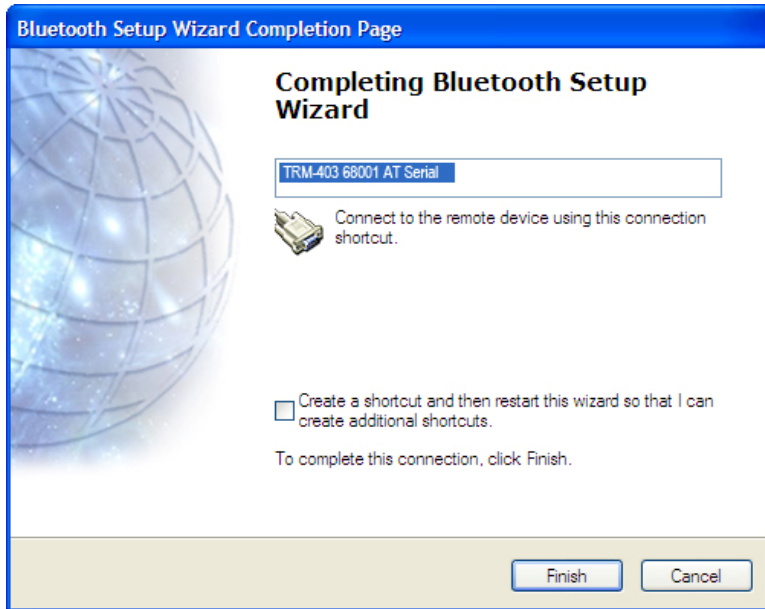
Type the word “default” (without the quotes and in all lower-case) and then click on the “Next” button.

- e. The following window will be displayed with the option to connect to the unit as a serial port:



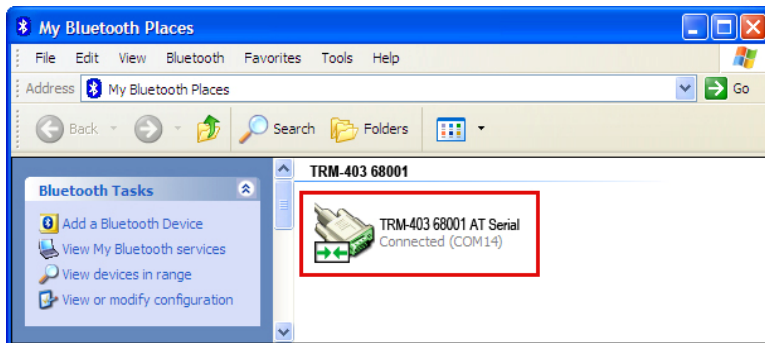
Make sure to check the box next to “AT Serial” and then click on the “Next” button.

- f. The following confirmation screen will be displayed:



Click on the “Finish” button.

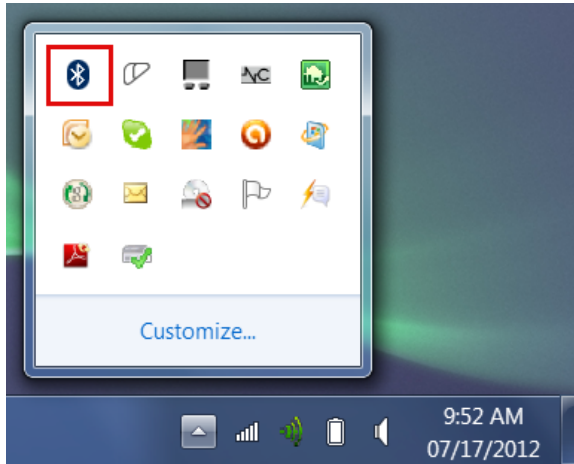
- g. The unit name (TRM-403 in this case) will now be displayed in the “My Bluetooth Places” window:



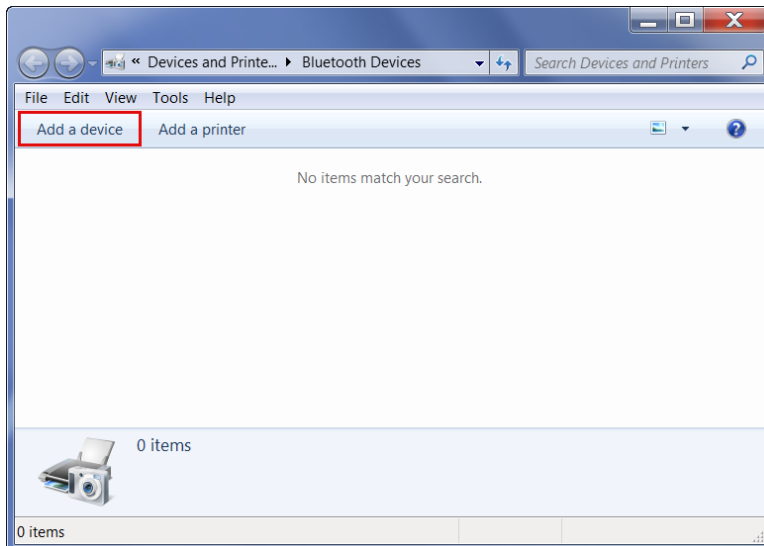
Note the port number listed under the device name. In the above case, the port number is COM14. Use this port number in the product's software to connect to the unit.

**For Windows 7:**

- a. Make sure the unit is turned on. Then double click on the Bluetooth system tray icon (on the bottom right corner of your computer screen):

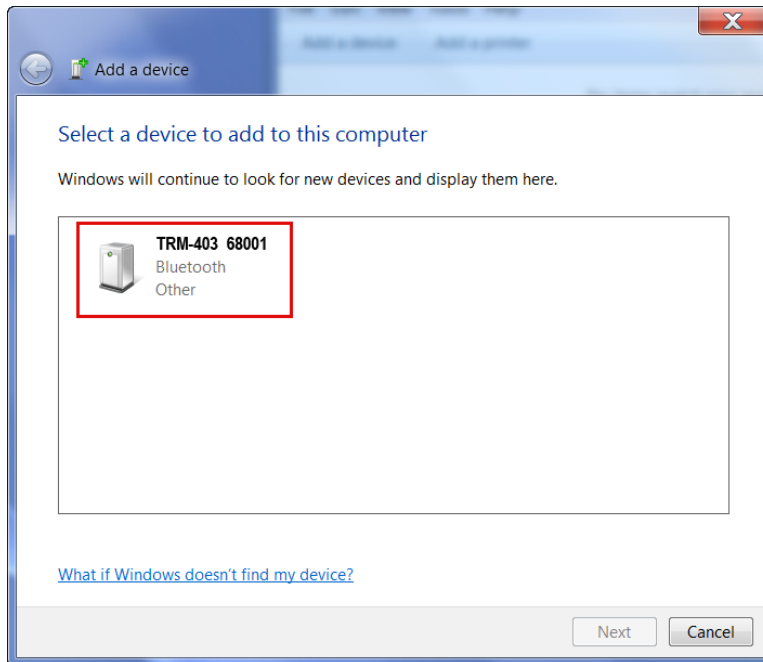


- b. The “Bluetooth Devices” window will be displayed:



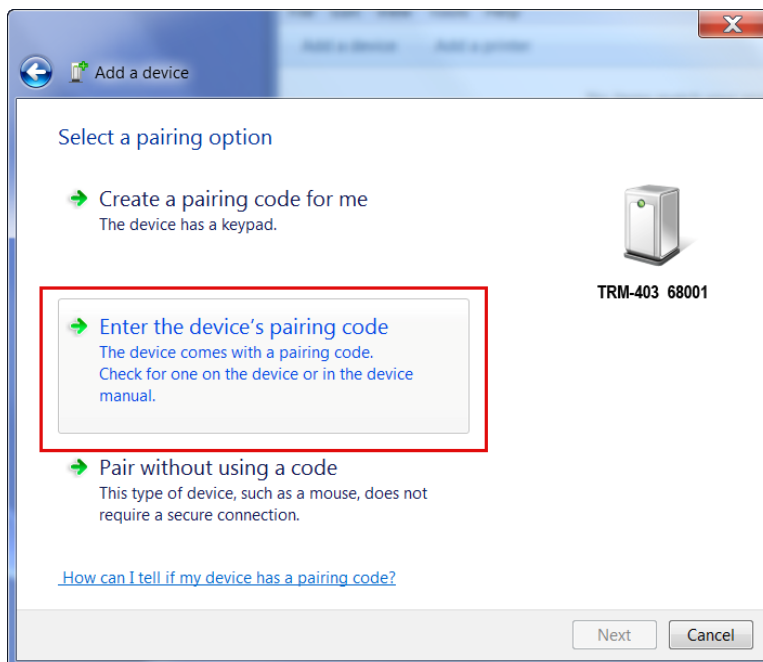
Click on “Add a device”.

c. All nearby Bluetooth devices will be listed:



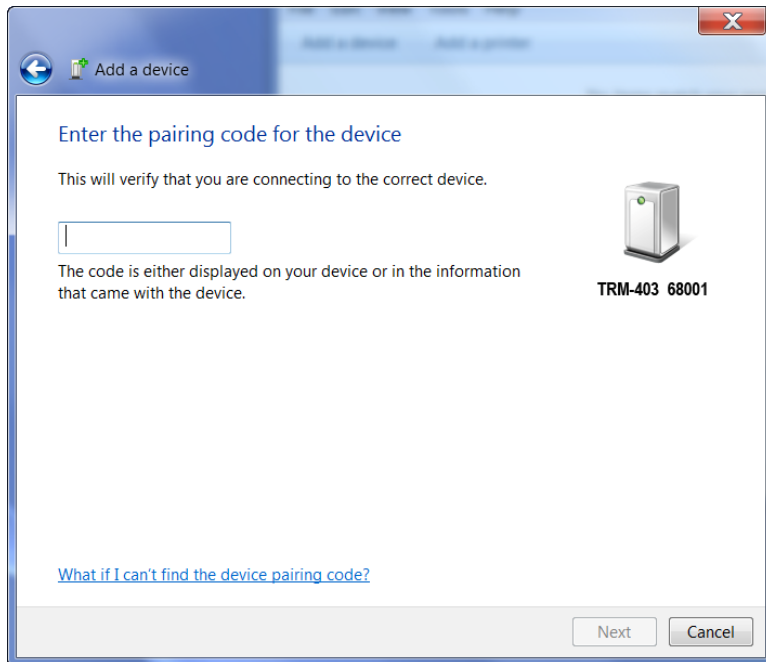
The unit will be listed as “UNIT S/N” where UNIT is the name of the device (TRM-403 in this example) and S/N is the device’s serial number. Click on the icon for the unit and then click on the “Next” button.

d. The device pairing screen will be displayed:



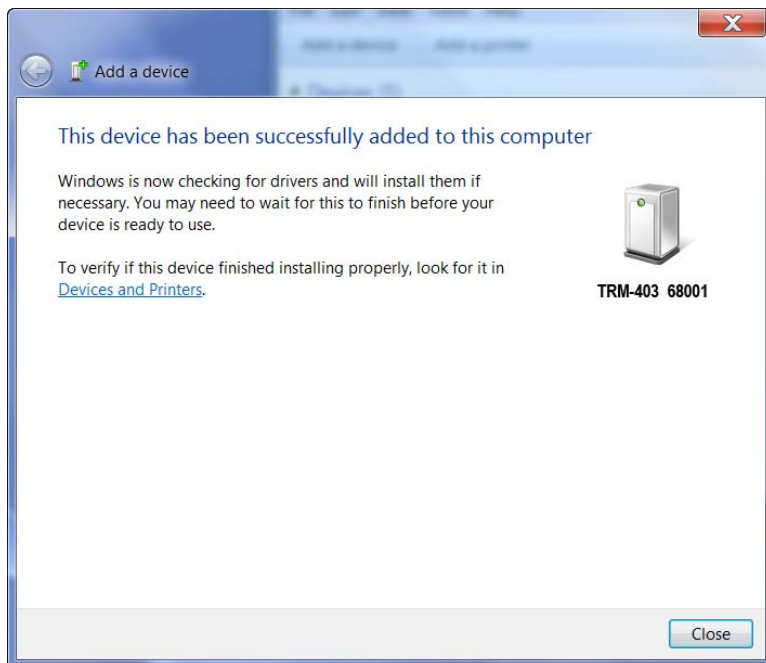
Click on “Enter the device’s pairing code” option.

e. The following window will be displayed:



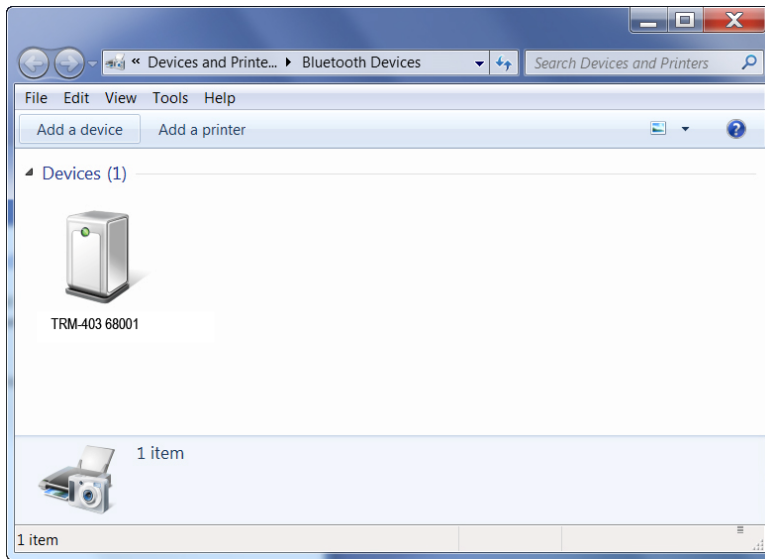
Type the word "default" (without the quotes and in all lower-case) in the text box and click on the "Next" button.

f. The following screen will be displayed:



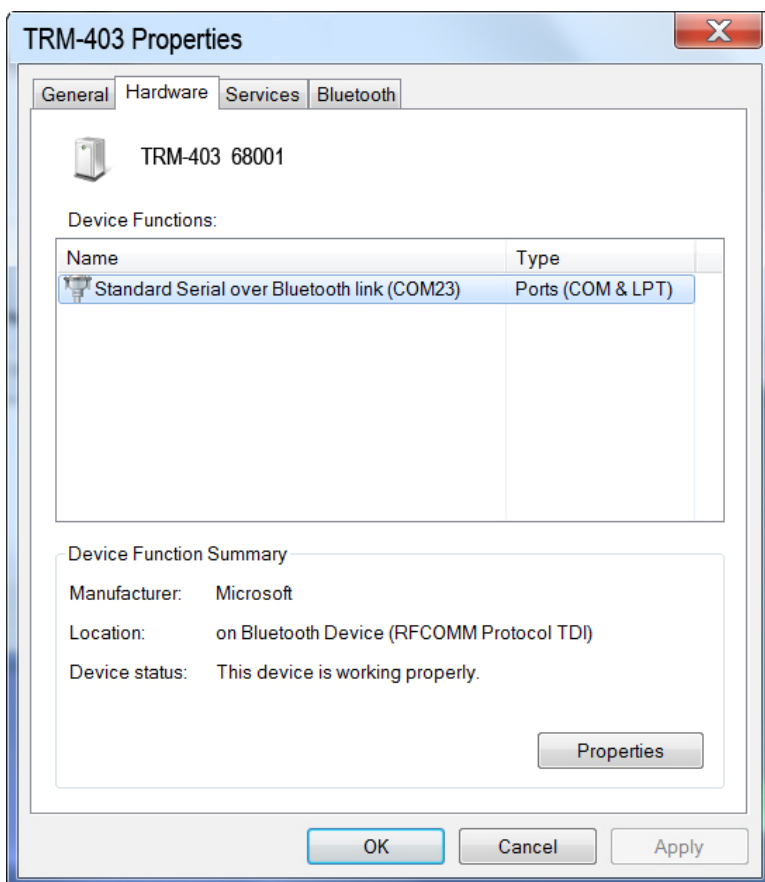
Click on the "Close" button.

- g. The unit (TRM-403 in this case) will now be listed under “Bluetooth Devices”:



Right click on the device's icon and select “Properties” from the pop-up menu.

- h. The properties window will be displayed. Click on the “Hardware” tab:

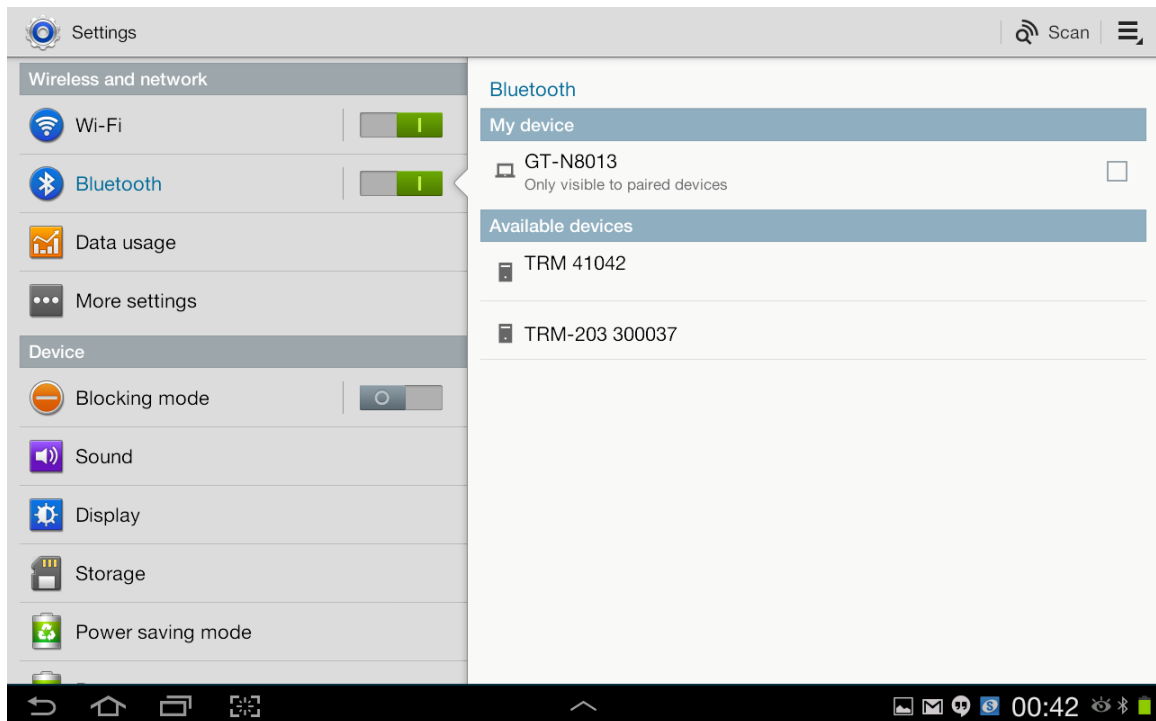


Note the port number listed after the device name (COM23 in the above example). Use this port number in the product's software to connect to the unit.

## Connecting a Vanguard Unit to an Android Tablet via Bluetooth

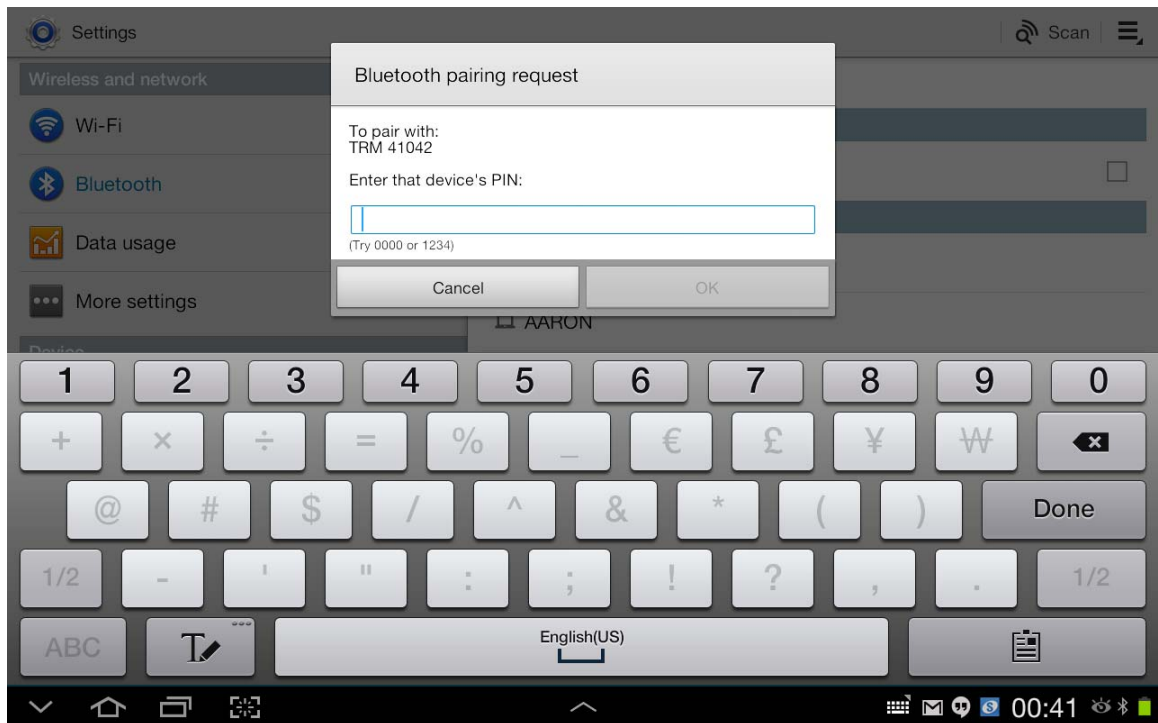
Vanguard Instruments provides Android-based software for some units that offer a Bluetooth wireless interface such as the TRM-203/403 and EZCT-2000C. Follow the steps below to pair your Android-based tablet with a supported Vanguard unit. A Samsung Android tablet is used for this example.

- a. Make sure the Vanguard unit is turned on. Turn on your Android tablet and tap on the settings icon. Then tap on "Bluetooth". If Bluetooth is not enabled, drag the slider to the right to enable it. The available Bluetooth devices will be listed as shown below:

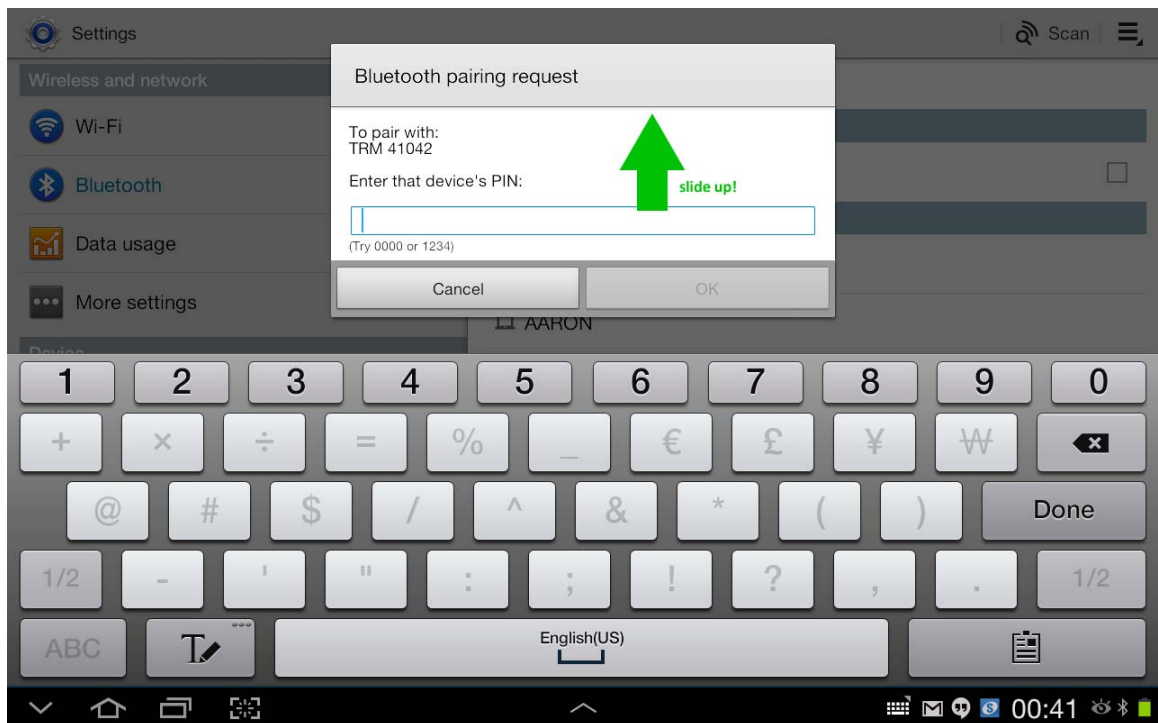




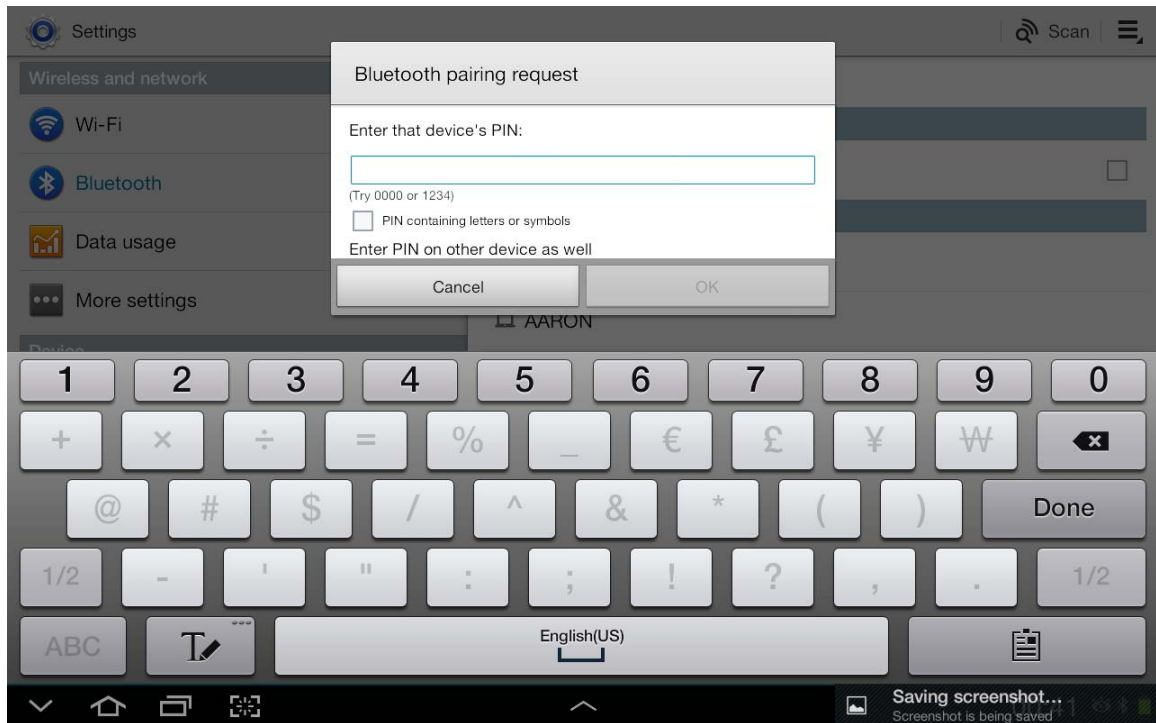
- b. Tap on the name of the device you would like to connect to. In this case, tap on TRM 4102. The following screen will be displayed:



- c. The pairing code for Vanguard units is 'default' (without the quotes). By default, only the numeric keys on the on-screen keyboard will be active. To enable alpha-numeric input, slide the dialog box up to reveal the additional options:

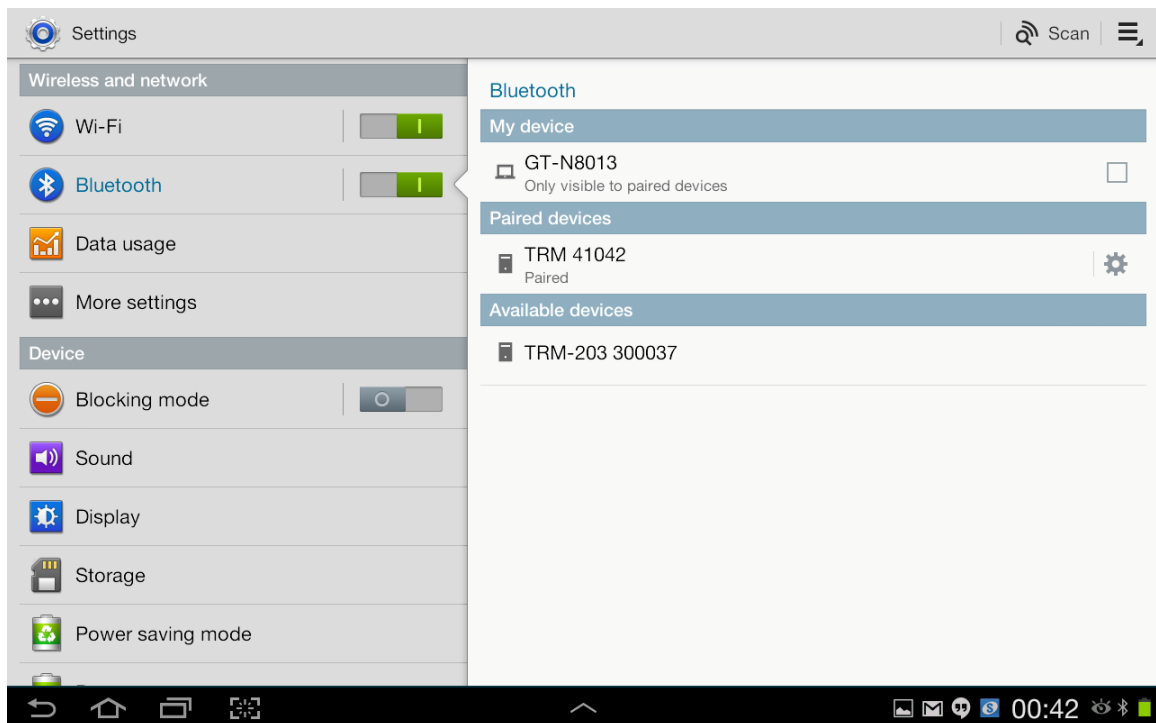


- d. You will now see the checkbox labeled "PIN containing letters or symbols":



Check the check-box and you will now be able to enter the pairing code 'default'. Tap on the "OK" button.

- e. The Vanguard unit should now be listed under the paired devices list:



- f. You can now launch the Vanguard Android app and the connected devices will be listed (LTCA software shown below):

